



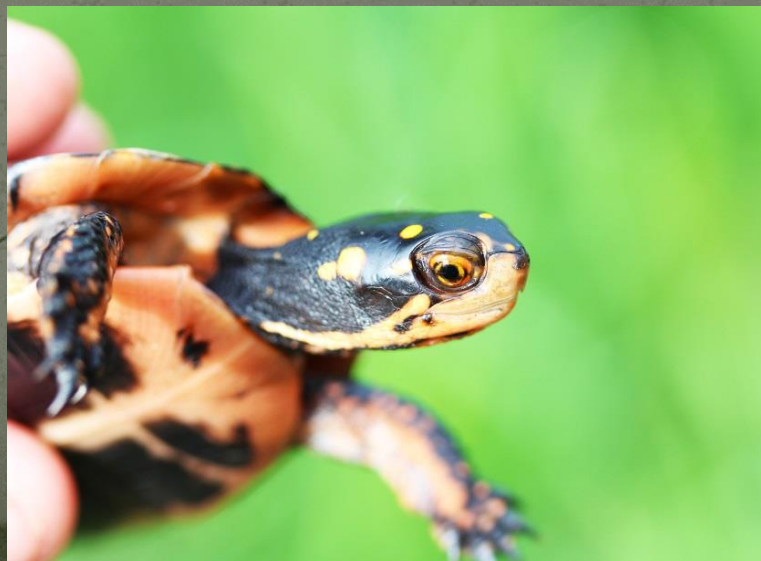
The Wetland Trust's Susquehanna Headwaters and Adjacent Basins In-Lieu Fee Wetland Mitigation Program

Presented by:

Patrick Raney, Ph.D.

Wetland Scientist

Upper Susquehanna Coalition



Outline

- The Wetland Trust / Upper Susquehanna Coalition
- Scientific Approach to Watershed/Site Selection
- Early ILF/Bank Projects
 - TWT's innovative mitigation bonding approach

The Wetland Trust (TWT)

- A 501 c(3) not-for-profit corporation formed in 2008 with a mission to protect wetlands of conservation importance

TWT has protected more than 1,200 acres of high quality wetlands, floodplains, and stream-frontage on five rivers/streams

Voluntarily protected occupied sites for T & E species

Board has >100 years combined wetland conservation experience

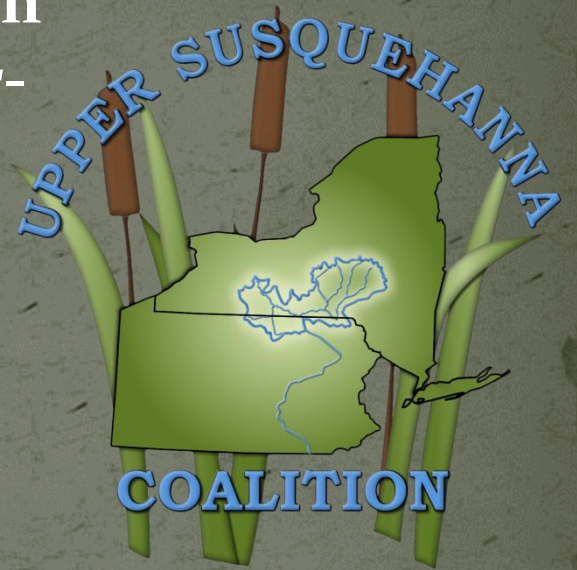


A medium fen protected by TWT in 2013 a priority area for NY-DEC, USFWS

The Upper Susquehanna Coalition (USC)

A Coalition of Soil and Water Conservation Districts Formed in 1992 to Address Water-Quality Issues

- *Has a Dedicated Wetland Program with An Award Winning Formula:*
- 2015 EPA Environmental Champion Award
- 2014 DEC Environmental Excellence Award
- By and large USC provides staffing support to TWT
 - Voluntary site protection
 - ILF, banking projects



10/10/2012

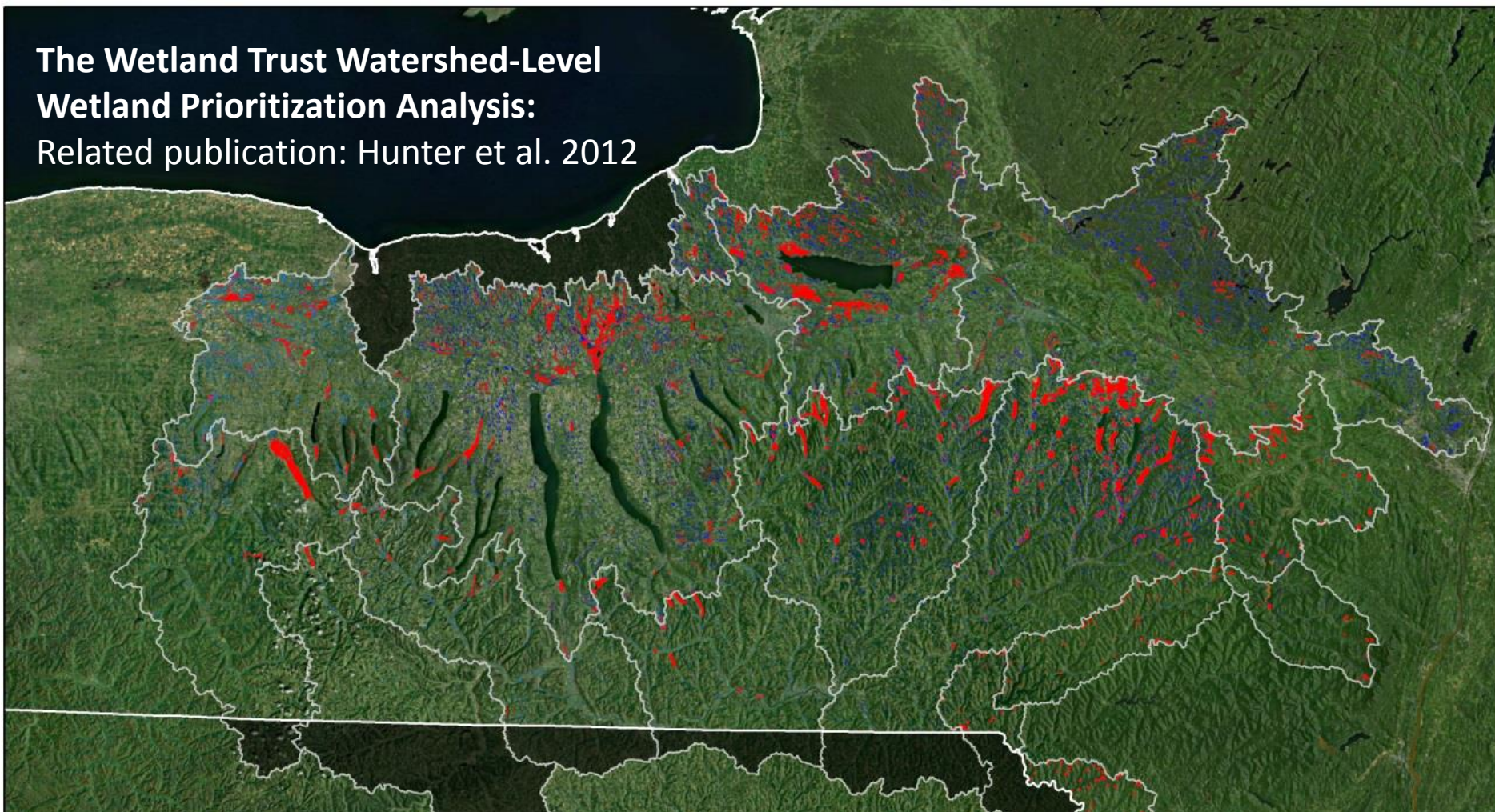
Compensatory Wetland Mitigation: *Why ILF?*

- 2008 Mitigation Rule – prefers Banks and ILF over permittee responsible:
- ILF Consolidates “small” impacts
- Larger sites have more species...
- *A vehicle for conservation/ restoration of biologically important areas*
- *So the question becomes where are the important areas to work?*



The Wetland Trust Watershed-Level Wetland Prioritization Analysis:

Related publication: Hunter et al. 2012



Legend

- TWT-ILF Service Areas
- Additional Prioritized Areas
- Lower Ranking Wetlands
- Higher Ranking Wetlands

0 5 10 20
Miles



Wetlands
DOI 10.1007/s13157-012-0315-7

ARTICLE

Improving Wetland Mitigation Site Identification Through Community Distribution Modeling and a Patch-Based Ranking Scheme

Elizabeth A. Hunter • Patrick A. Raney • James
P. Gibbs • Donald J. Leopold



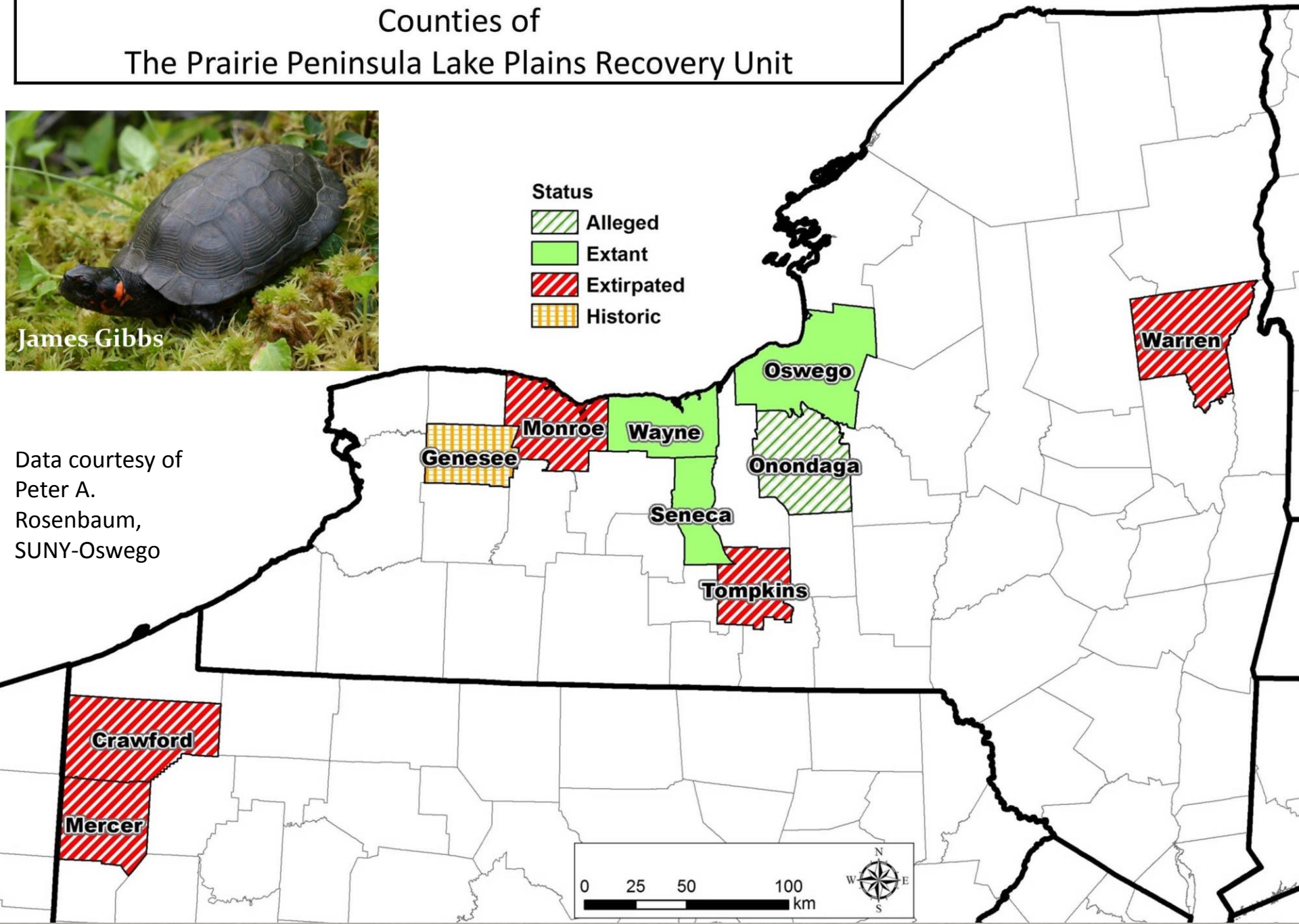
Status of the Bog Turtle (*Glyptemys muhlenbergii*) in the
Counties of
The Prairie Peninsula Lake Plains Recovery Unit



Status

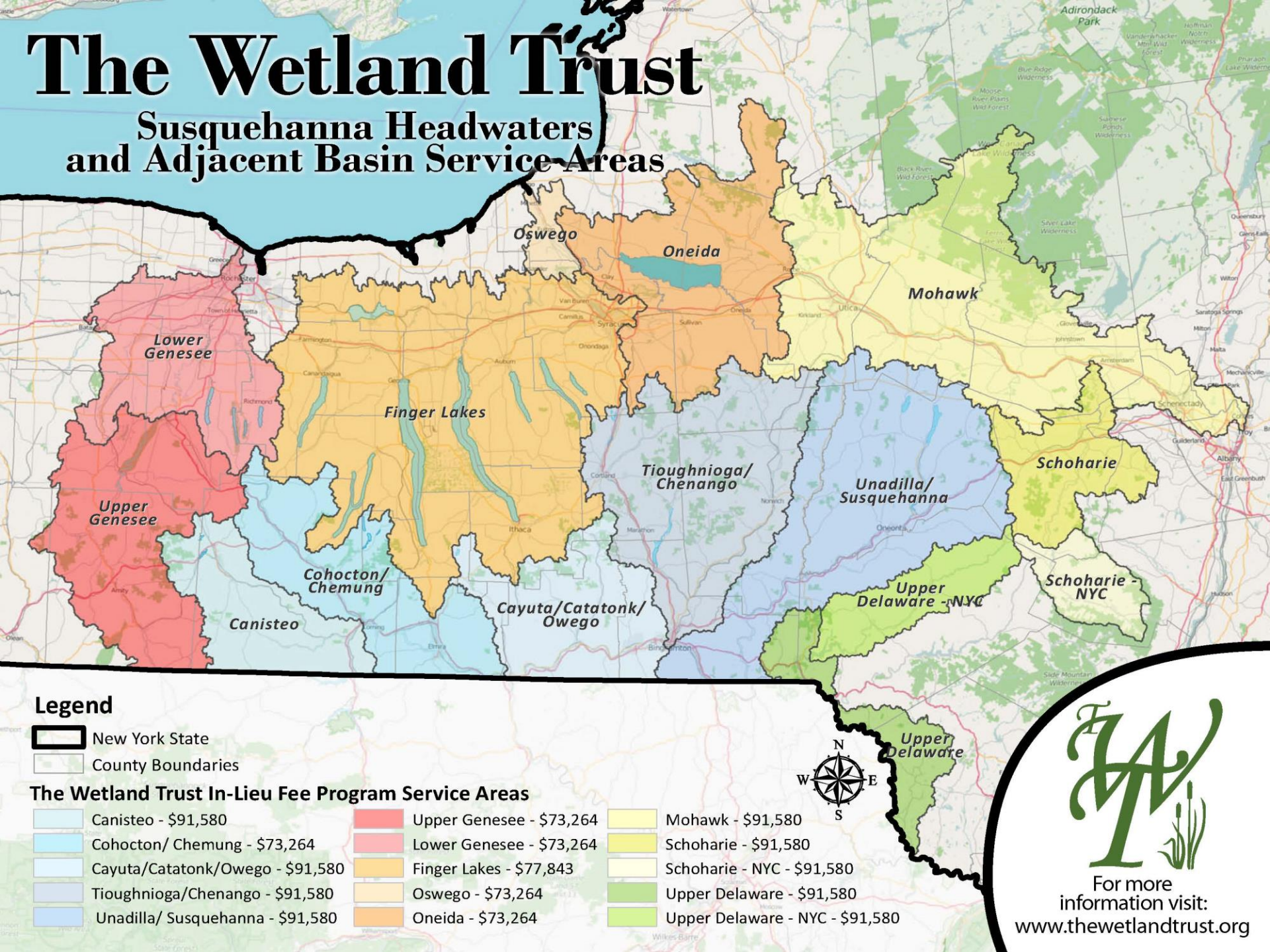
- Alleged
- Extant
- Extirpated
- Historic

Data courtesy of
Peter A.
Rosenbaum,
SUNY-Oswego



The Wetland Trust

Susquehanna Headwaters and Adjacent Basin Service Areas



For more
information visit:
www.thewetlandtrust.org

Riverbend Golf Course: Hydrological Restoration

> United States · NY · Chenango

★ Monitoring wells

★ Disrupt drainage lines

★ Removed prior fill

Install ditch plugs

Riverbend Golf Club

Feedback

(Microsoft – Birds eye)







July 2015

- ~ 100 acres coming out of turf-management
- Restore 35+ acres of scrub shrub and forested wetland
- Restore 4 + acres of emergent wetland restoration
- Restore 28+ acres of floodplain forest
- Establish a 16.5 acre warm season grassland
- Preserve ~10 acres existing wetlands
- Hellbender rearing and research facility, providing housing to graduate students
 - (SUNY Buffalo, ESF)

Monitoring well, February 2016

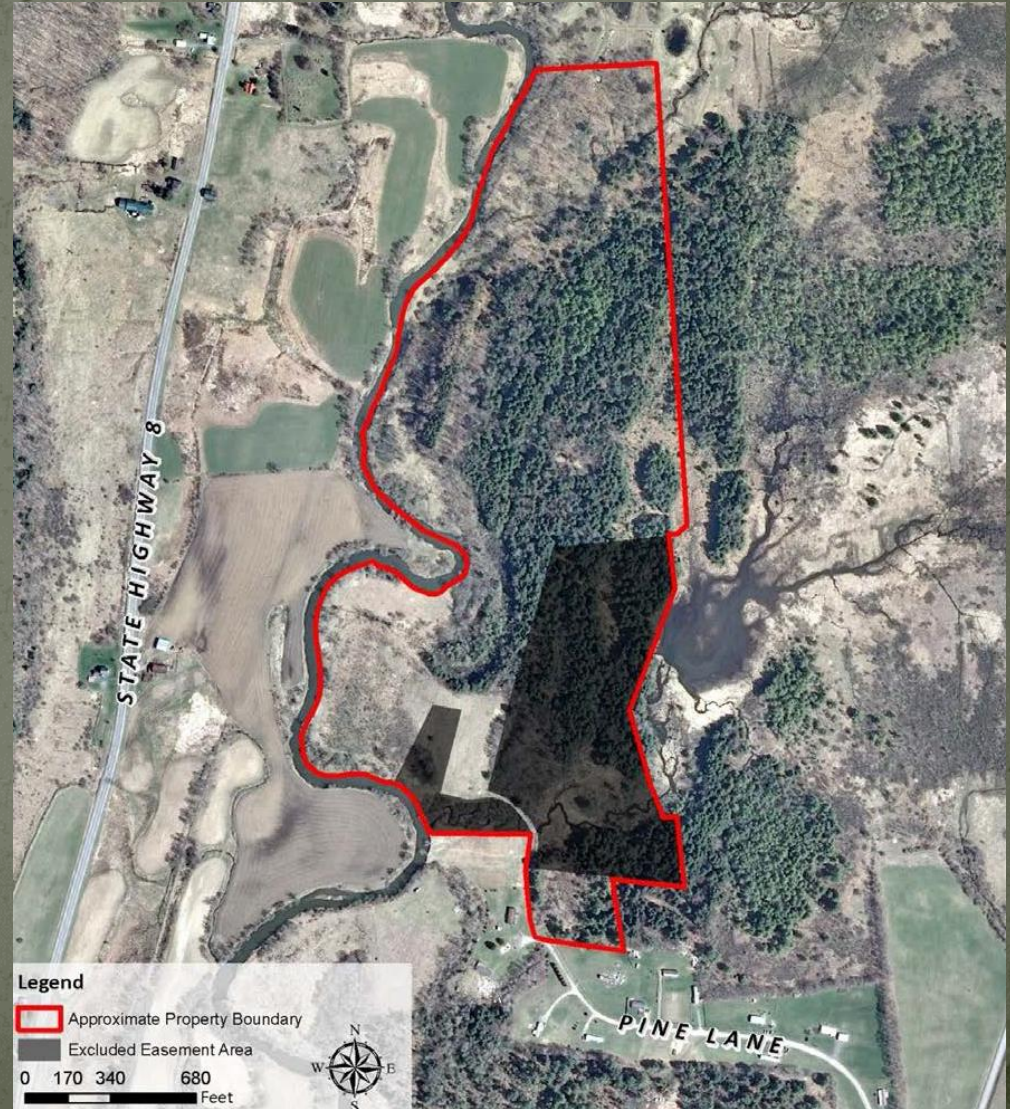


February 2016



Alternative Approach to Site Bonding!

BONUS Protection Sites



Pine Lane



Pine Lane

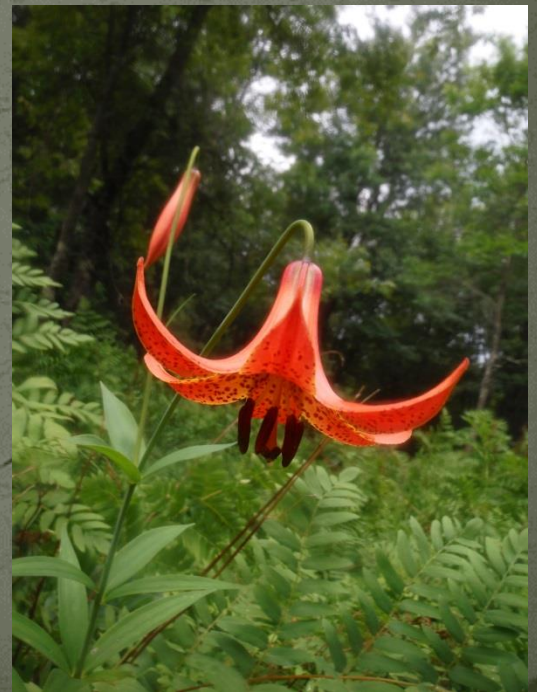


Alternative Financial Assurances!

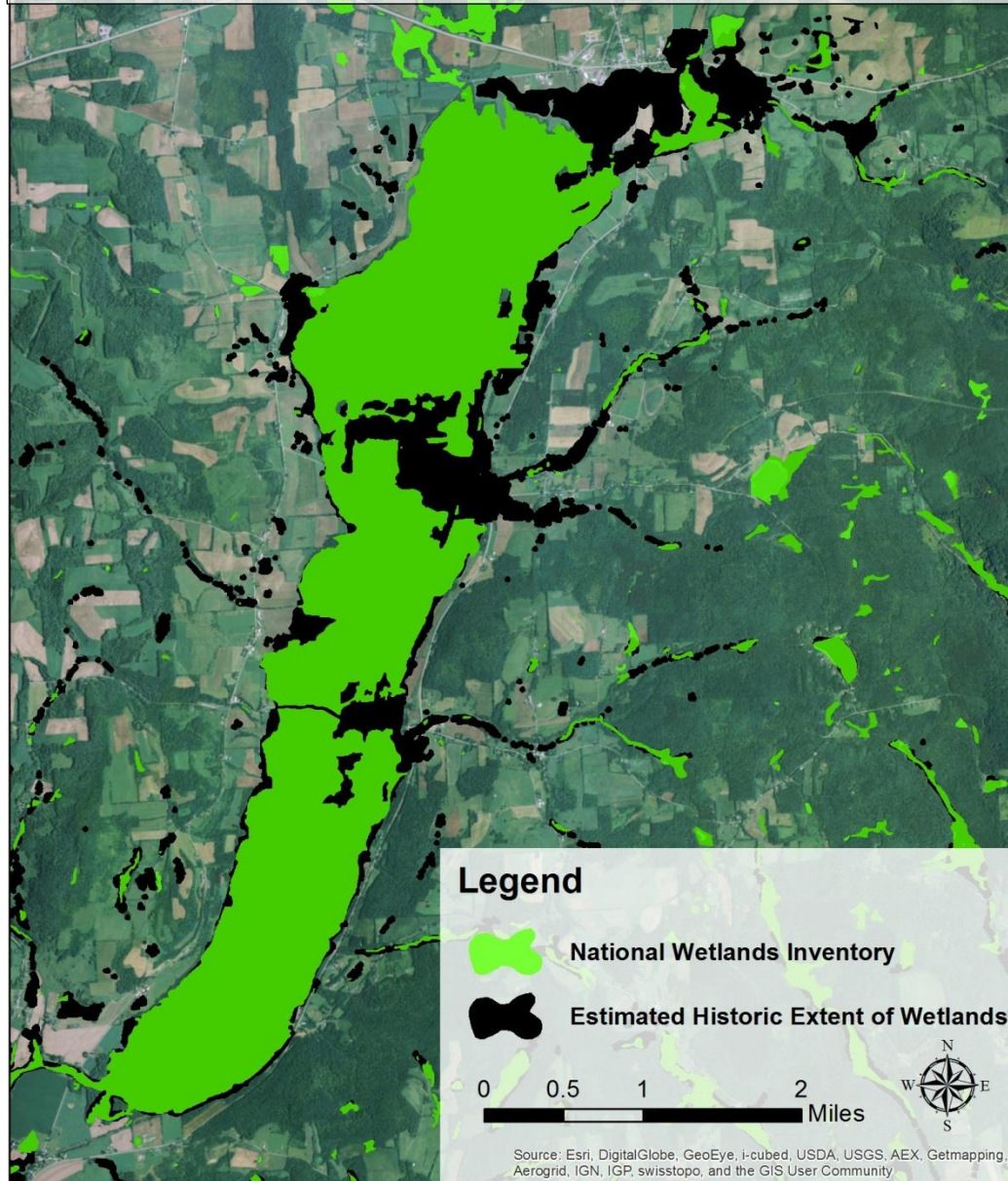
MORE BONUS Protection Sites



Oaks Creek



Tioughnioga/Chenango Rivers Watershed: Nine Mile Swamp



Nine Mile Swamp





Nine Mile Swamp

Nine Mile Swamp



The Strange Case of The Inland Salt Marsh: One of the Northeast Region's Rarest Ecological Communities



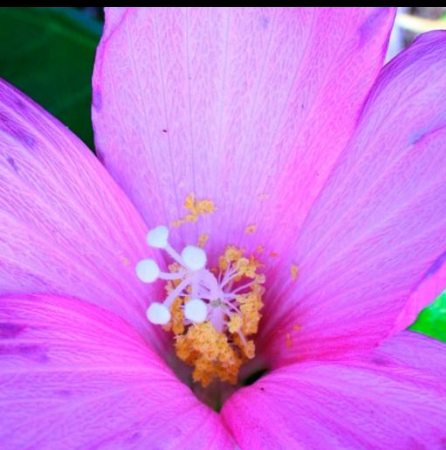
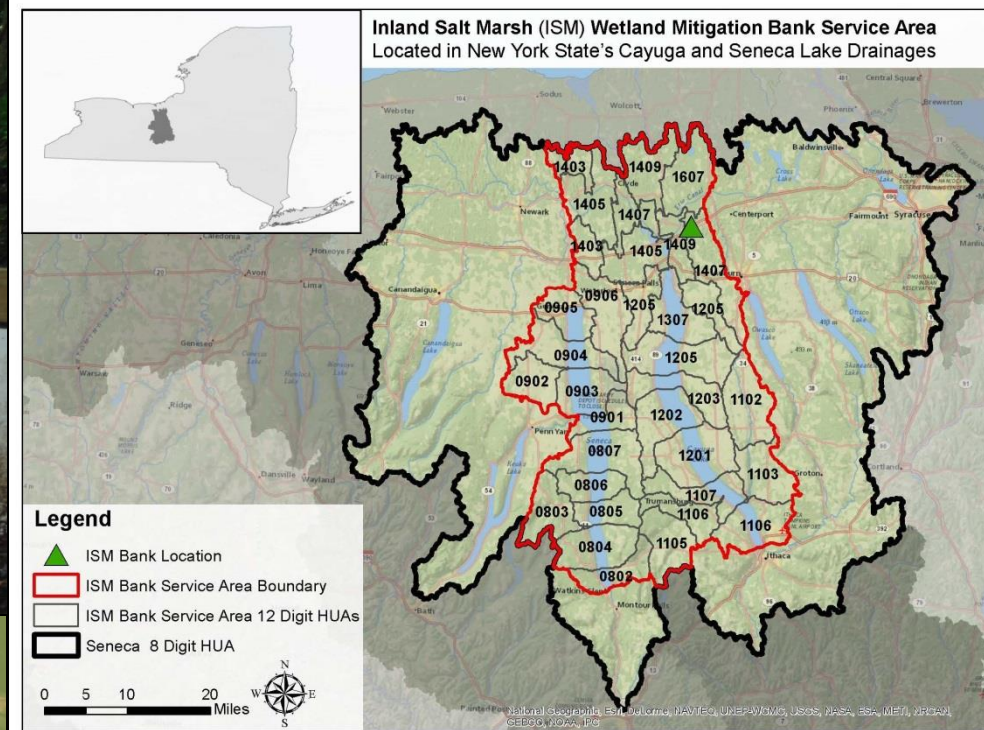
Eallonardo and Leopold, 2014



Inland Salt Marsh Bank - Approved



~ 5 acres of inland salt marsh
*To be constructed in 2016



Nelson DeBarros



- www.thewetlandtrust.org

Jim Curatolo, TWT Chair

jc@thewetlandtrust.org

4729 State Route 414
Burdett, NY 14818
(607) 546-2528

